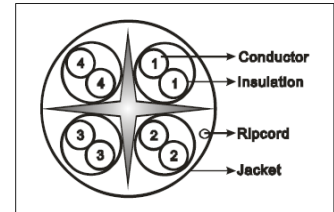
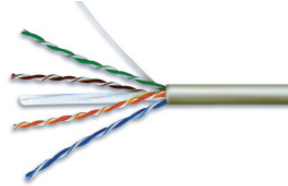


# Infini<sup>™</sup> 6

## Category 6 4-Pair UTP Cable

### Features:

- Comply with Cat 6 standards: ANSI/TIA/EIA 568 and ISO/IEC 11801:2002 Class E 2<sup>nd</sup> Edition
- UL reference standards: UL1581 and UL444
- Central spine maintaining pair separation to ensure high performance
- LSZH sheath complies with IEC 60332-1 & 3C, IEC 60754-1 & 2, IEC 61034-2 and ASTM D-2863



### Characteristic:

Electrical	
Impedance	100 ± 15Ω
Conductor Resistance	≤ 8.2Ω/100m
Mutual capacitance	≤ 5.6nF/100m
Voltage endurance	DC 1500V/min
Resistance Unbalance	≤ 5.0%

Construction	
Diameter	6.5 ± 0.5 mm
Conductor material	0.575mm (23 AWG) soft annealed bare copper wire
Insulation material	HDPE
Sheath material	CM / CMR / LSZH

### Performance:

Frequency	RL dB	Attenuation dB/100m	NEXT dB	PSNEXT dB	ELFEXT dB	PSELFEXT dB
1 MHz	20.0	2.0	74.3	72.3	67.8	64.8
20 MHz	25.0	8.5	54.8	52.8	41.8	38.8
62.5 MHz	21.5	15.4	47.4	45.4	31.9	28.9
100 MHz	20.1	19.8	44.3	42.3	27.8	24.8
200 MHz	18.0	29.0	39.8	37.8	21.8	18.8
250 MHz	17.3	32.8	38.3	36.3	19.8	16.8
300 MHz	16.8	36.4	37.1	35.1	18.3	15.3
400 MHz	15.9	43.0	35.3	33.3	15.8	12.8
500 MHz	15.2	48.9	33.8	31.8	13.8	10.8
650 MHz	14.4	57.2	32.1	30.1	-	-

### Ordering Information:

Order no.	Description
IN6-101-XX	Cat 6 4-Pair CM rated UTP Cable, 305m/box
IN6-102-XX	Cat 6 4-Pair CMR rated UTP Cable, 305m/box
IN6-103-XX	Cat 6 4-Pair LSZH UTP Cable, 305m/box
XX= Color Code	(WH = White, GR = Grey, BL = Blue, etc.)



\* Infini<sup>™</sup> Cable System reserves the right to modify products and specifications without prior notice.