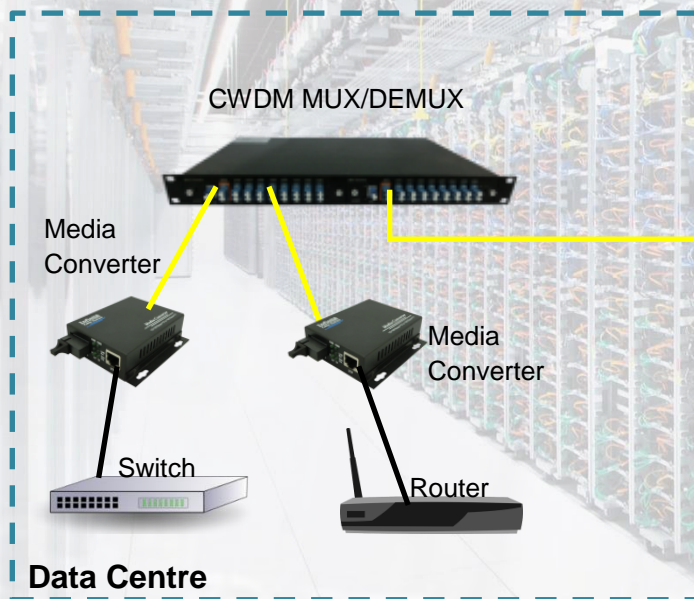
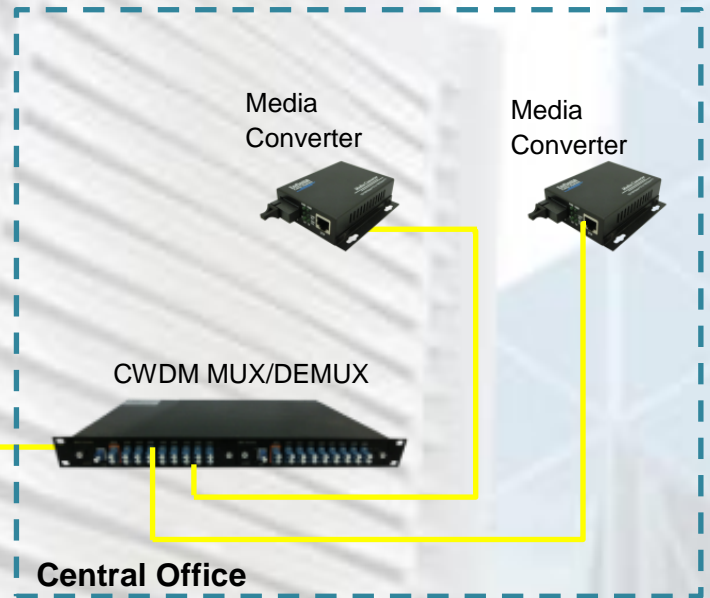




## CWDM Project for Telecom Service Enhancement

Infiniċ Cable System provides the most costs effective CWDM MUX/deMUX solution for optical transport for telecoms metropolitan network, data center and campus usage. The highly flexible system architecture, the scalability of the CWDM passive device is able to meet a wide variety of application scenarios. It supports 4 and 8 channels according to the requirements from the customer. It is transparent to any protocol at specific wavelengths for point to point configuration.

The CWDM solution complies with Telcordia GR-1221-CORE standard. It comes together with splitters and full suite of cabling solution, Infiniċ Cable System is capable of providing a complete solution for the customers.



Single Fiber

### [Eight CWDM Channel Passive Device]

Channel : 1271 ~ 1611nm CWDM Channel  
 Dimension : 19-inch 1RU  
 Insertion Loss: ≤ 8.0 (8 CH)  
 Fiber Type : SM, 9/125  
 Connector : LC/UPC

