

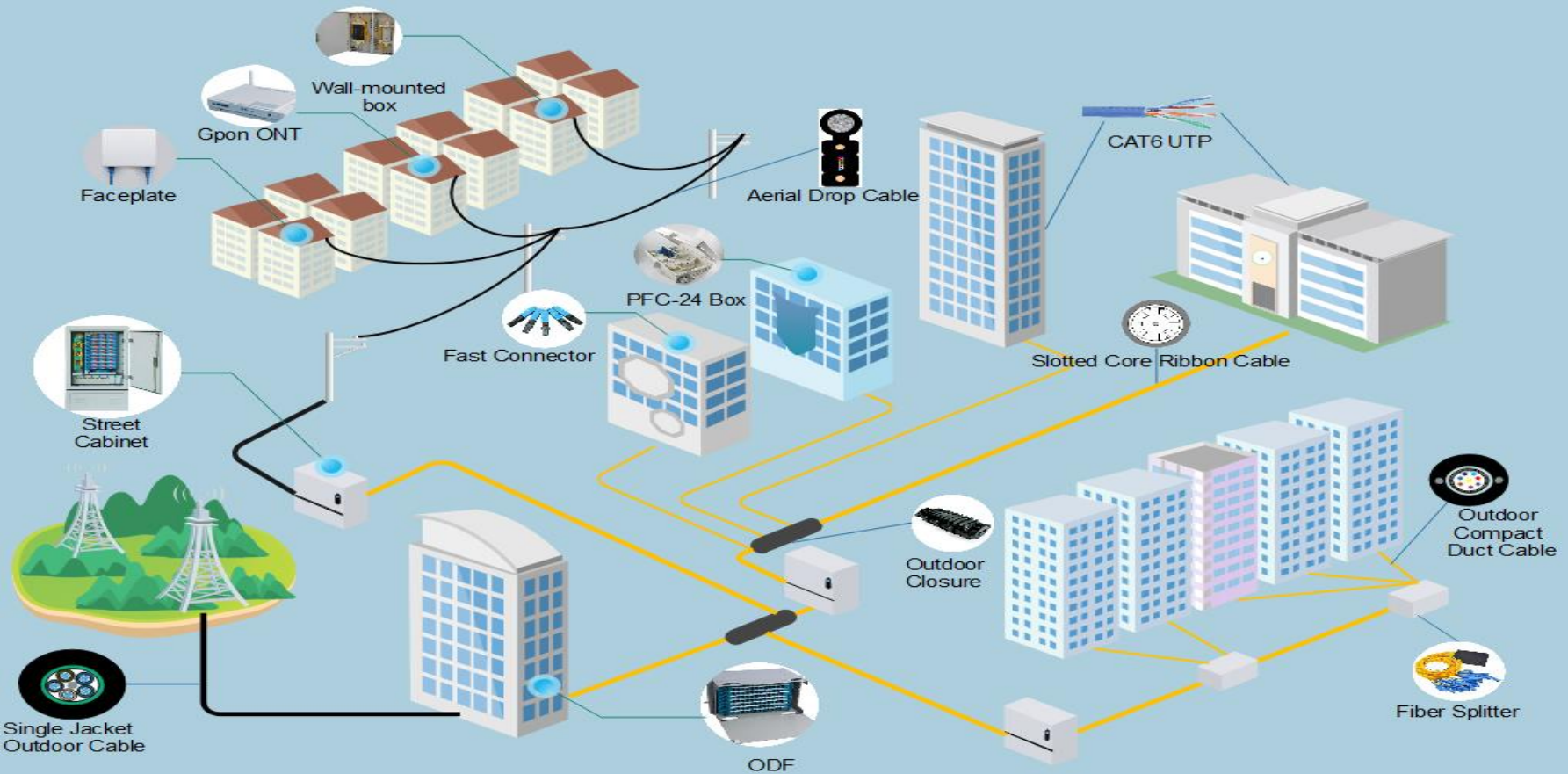
Infini^{te}
Cable System

Bicsi



FTTX Solutions
CASE STUDY

About Infinite



Our extensive experience in providing FTTH solution reduces our customers' system implementation time. With our expertise in implementing FTTH system, we assist the customers turning a system concept to a system design and then to implement the system. We walk through the whole process of system implementation from creating system design to implementation with the customers.

Fiber to the home

(The Apex FTTH Project of HKBN)

FTTH (fiber-to-the-home) is a form of fiber-optic communication delivery that reaches one living or working space. The fiber extends from the central office to the subscriber's living or working space. Once at the subscriber's living or working space, the signal may be conveyed throughout the space using any means, including twisted pair, coaxial cable, wireless, power line communication, or optical fiber.

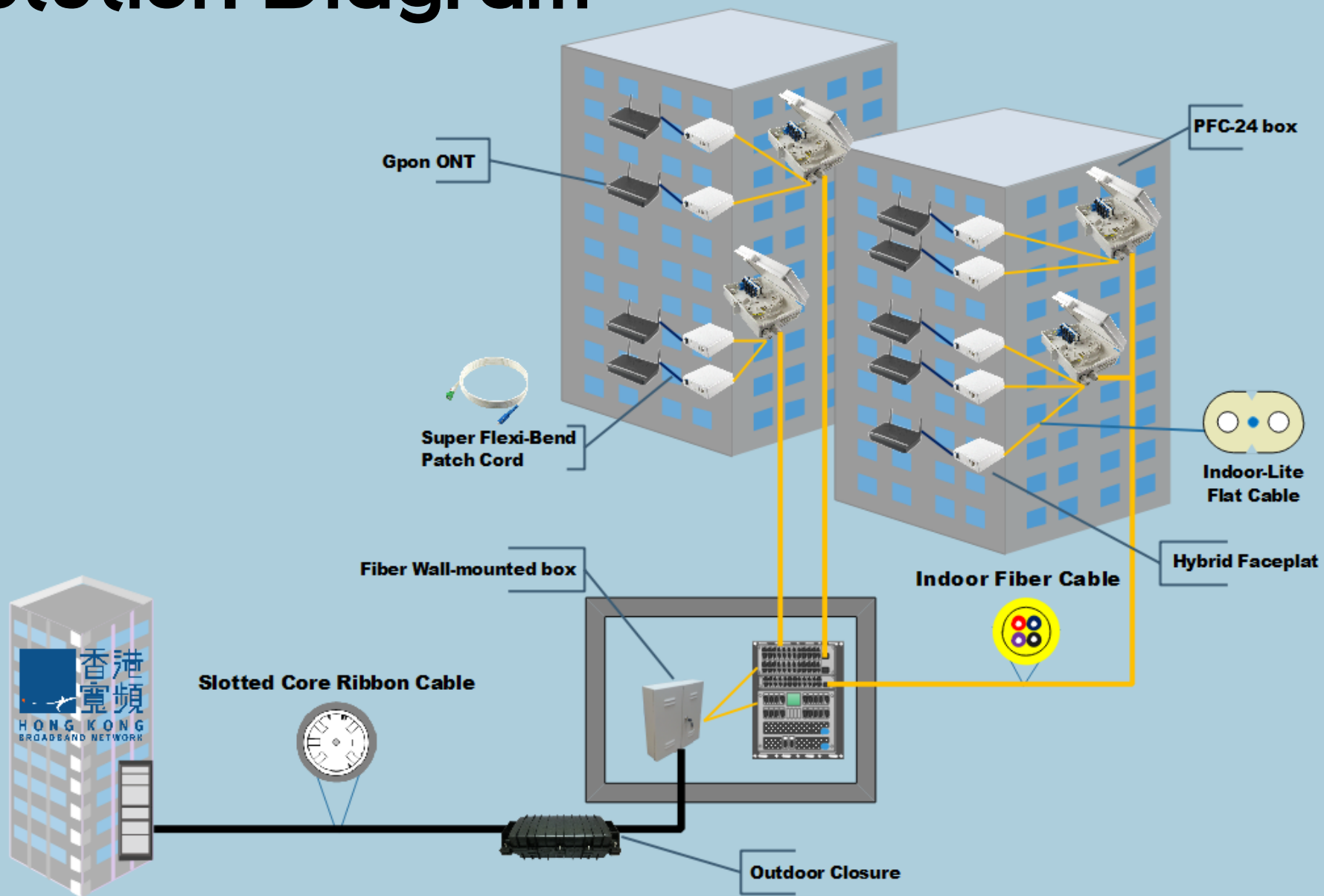


Benefit of FTTH



- ***Reliability & Future Flexibility***
- ***Upcoming Applications***
- ***High Internet Speed***
- ***More Bandwidth***
- ***Affordable***

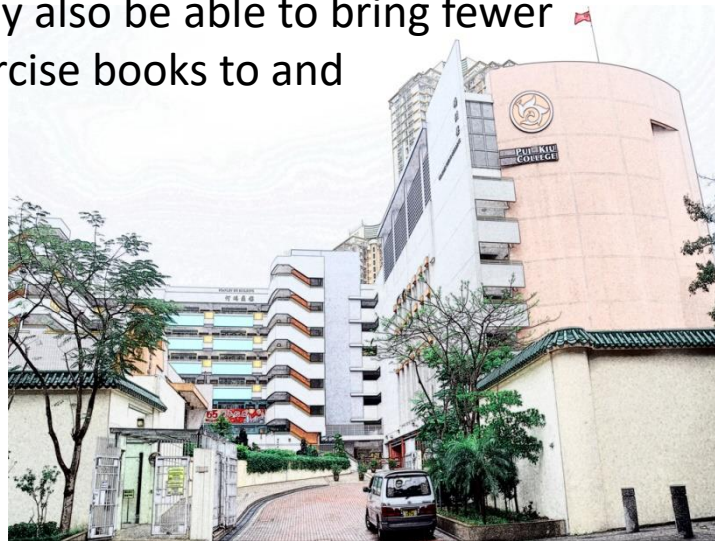
Solution Diagram



Fiber to the classroom (FTTC Project Of PCCW)

As a result, teachers will save time in pre-class preparation and in the assessment of assignments. Classroom management and the teaching process will become more efficient and effective, as teachers are in charge of lesson content on students' tablets.

At the same time, students will find this mode of studying more interesting and engaging. They may also be able to bring fewer textbooks and exercise books to and from school.



School List

Kwok Tak Seng Catholic Secondary School

The Independent Schools Foundation Academy

Castle Peak Catholic Primary School

....

Kei Yuen College

....

HK Sea School

Ma Kam Chan Memorial Primary School

....

....

PLY Yao Ling Sun College

Sir Ellis Kadoorie Secondary School

....

CCC Rotary Secondary School

St. Andrew's Catholic Primary School

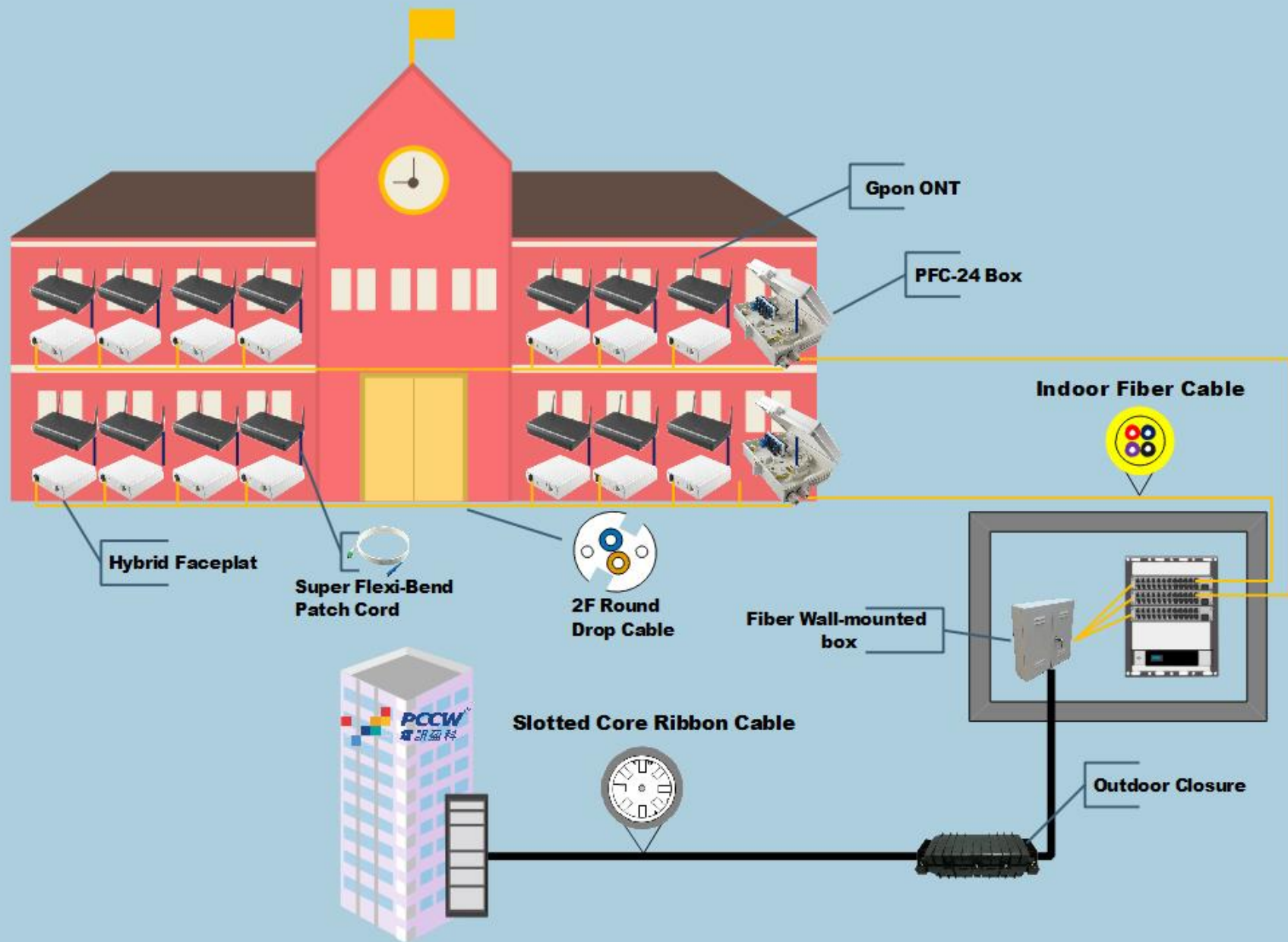
....

Kwai Chung Methodist College

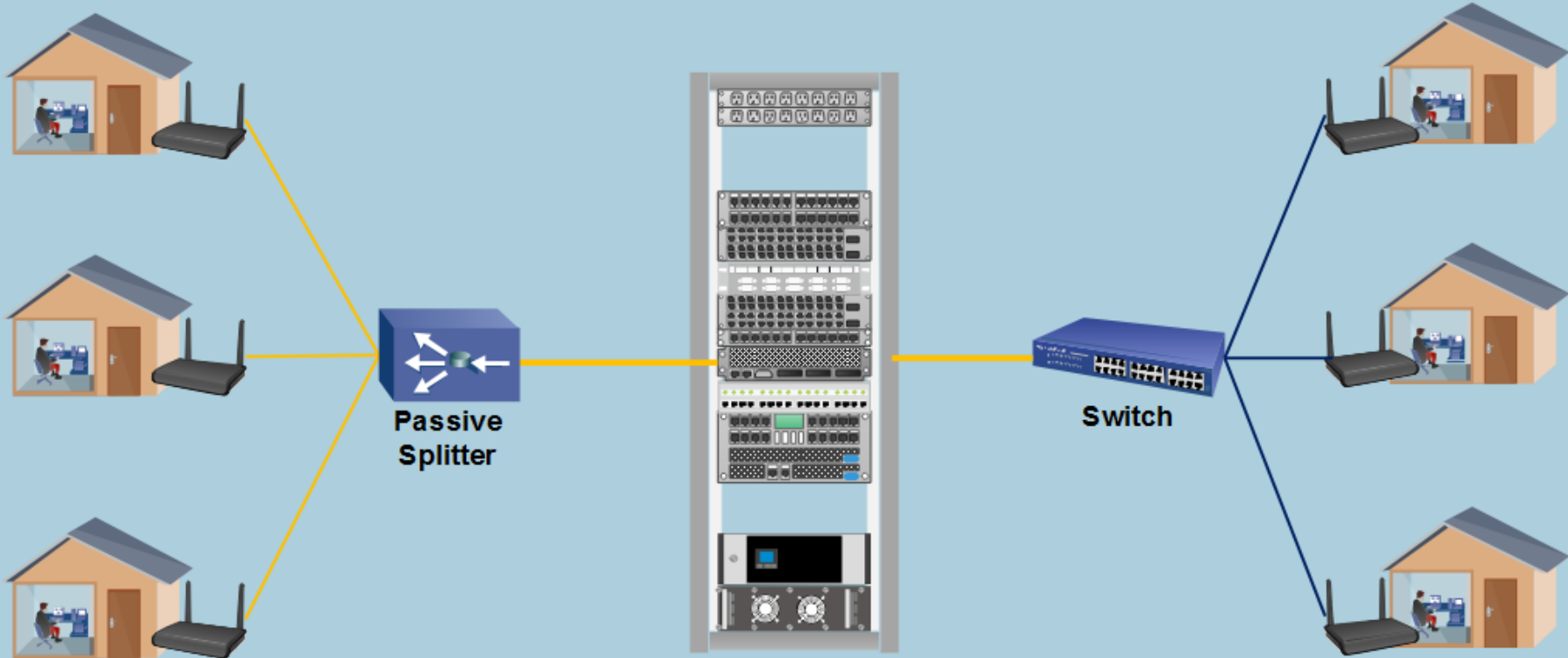
....



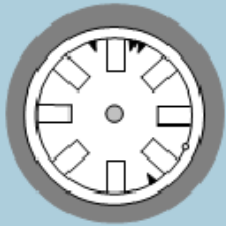
Solution Diagram



FTTX VS Traditional Networks



Product Features



INF1251
Slotted Core Ribbon Cable

- | Slotted core provide high fiber density with small cable diameter
- | PE sheath or low smoke zero halogen and fire retardant sheath
- | Stainless steel wire strength member provides excellence tensile strength

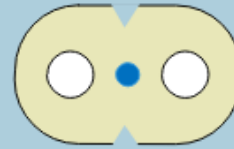
INF1310
Indoor Distribution Cable

- | Light, flexible and compact design
- | Suitable for in-building wiring, building backbone
- | Low smoke zero halogen sheath



INF1060
Indoor-Lite Flat Cable

- | Extra-tiny design, suitable for additional insertion into duct
- | Tiny slit on both sides to allow easy strip
- | Low smoke zero halogen with fire retardant sheath



INF1087
Easy-Pull™ 2F Round Drop Cable

- | Round-shape design provide excellent bending performance
- | Specialized Easy-Pull™ sheath allows cable to deploy in harsh environment
- | Low smoke, zero halogen and flame retardant sheath



Product Features



INF7132
Wall-Mount Box

| Design for termination part of the access network in customer premise

| Steel case provides excellent mechanical protection

| Adaptor type: SC/ST/FC



INF9140
Outdoor Closure

| Suitable for outdoor fiber network distribution

| Suitable for underground and direct buried, aerial installation

| Suitable for ribbon, loose tube fiber

INF5133
FTTH Hybrid Faceplate

| Suitable for indoor FTTH network

| Mounts directly to electrical junction box (86x86mm) or wall
| 1 x ports for 2 fiber network adaptors

| 2 x ports for keystone jack or modular ports

| Modular ports available for fiber network adaptors (SC, ST, etc.) or AV system adaptors (RCA, Coaxial, HDMI, etc.)



INF7133#
FTTH Optibox-24
PFC-24

| Multipurpose optical closure for distribution, termination and splitting

| Compact size, light weight, easy to install

| Accommodate PLC splitter

| IP55 protection



Product Features

INF3050 Super Flexi-Bend Patch Cord

- | Excellent crush resistance for side pressure
- | Bend optimized design for bending sensitively applications such as FTTH, ONU connection and premise network



H640RW/H640GW Gpon ONT

- |4x10/100/1000Base-T
- |2xFXS
- |1xGPON(SC/APC)
- |WIFI Interface(IEEE802.11b/g/n)
- |Multiple SSID

Infini^{tilde}
Cable System



ZT International Ltd

Address: 11/F EW International Tower,120 Texaco Road,Tsuen Wan, Hong Kong

Tel: +852 2336 8660

Fax: +852 2336 0812

Email: info@infintecablesystem.com

URL: <http://www.infintecablesystem.com>

